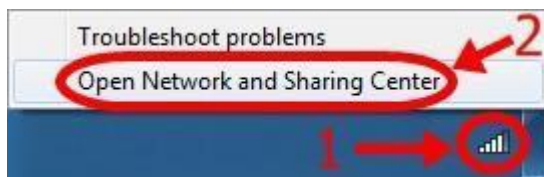


To connect to ChulaWiFi on Windows 7

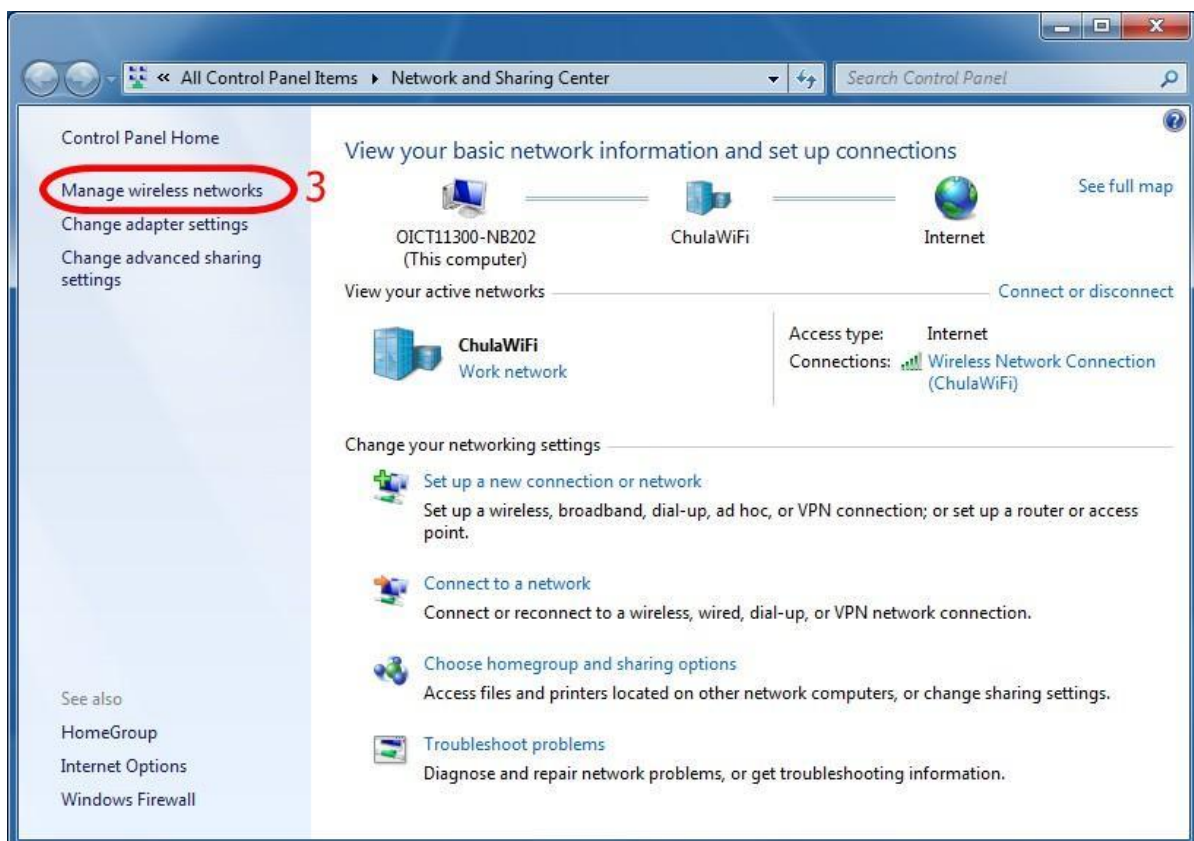
If you have connected successfully to ChulaWiFi before, but now run into trouble, remove the program first then follow the steps below.

To remove a profile network

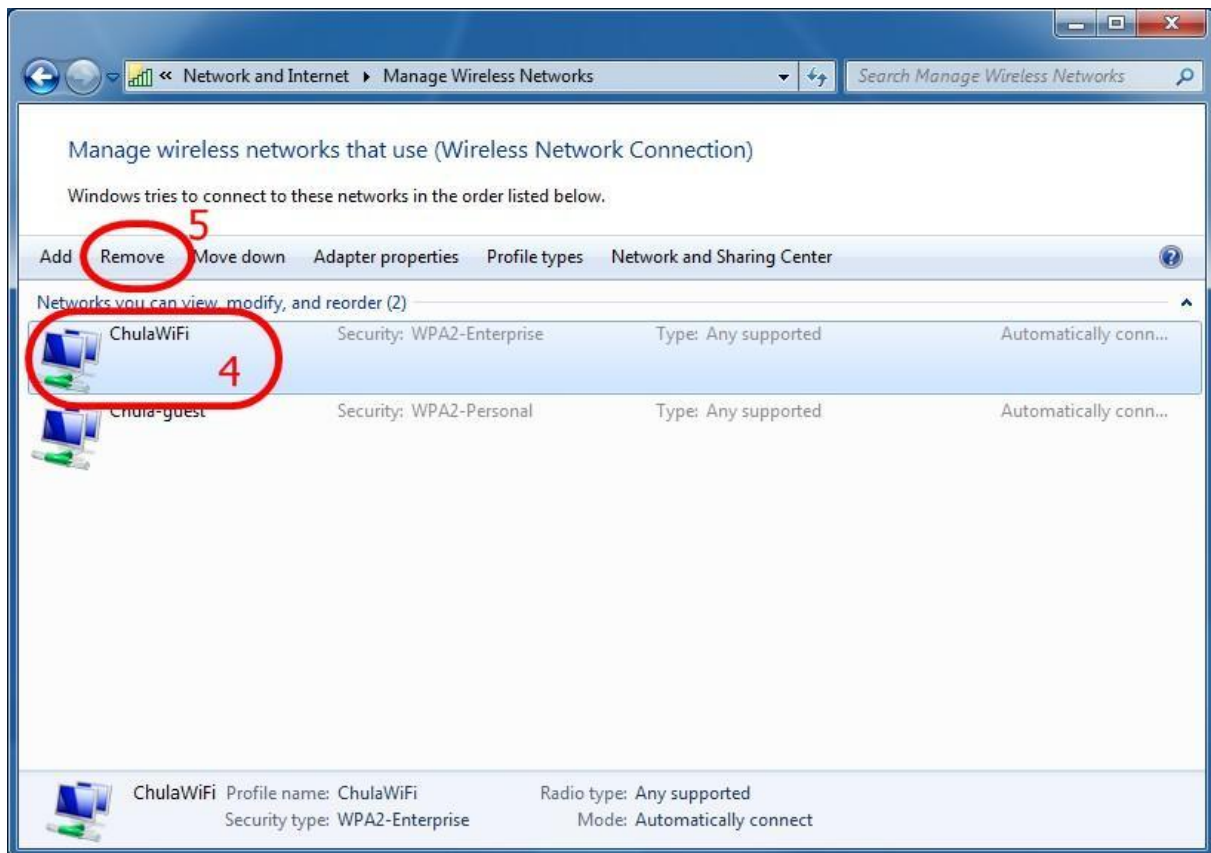
1. Right click on *WiFi* symbol
2. Select *Open Network and Sharing Center*



3. Click on *Manage wireless network*



4. Click on *ChulaWiFi*
5. Click *Remove*

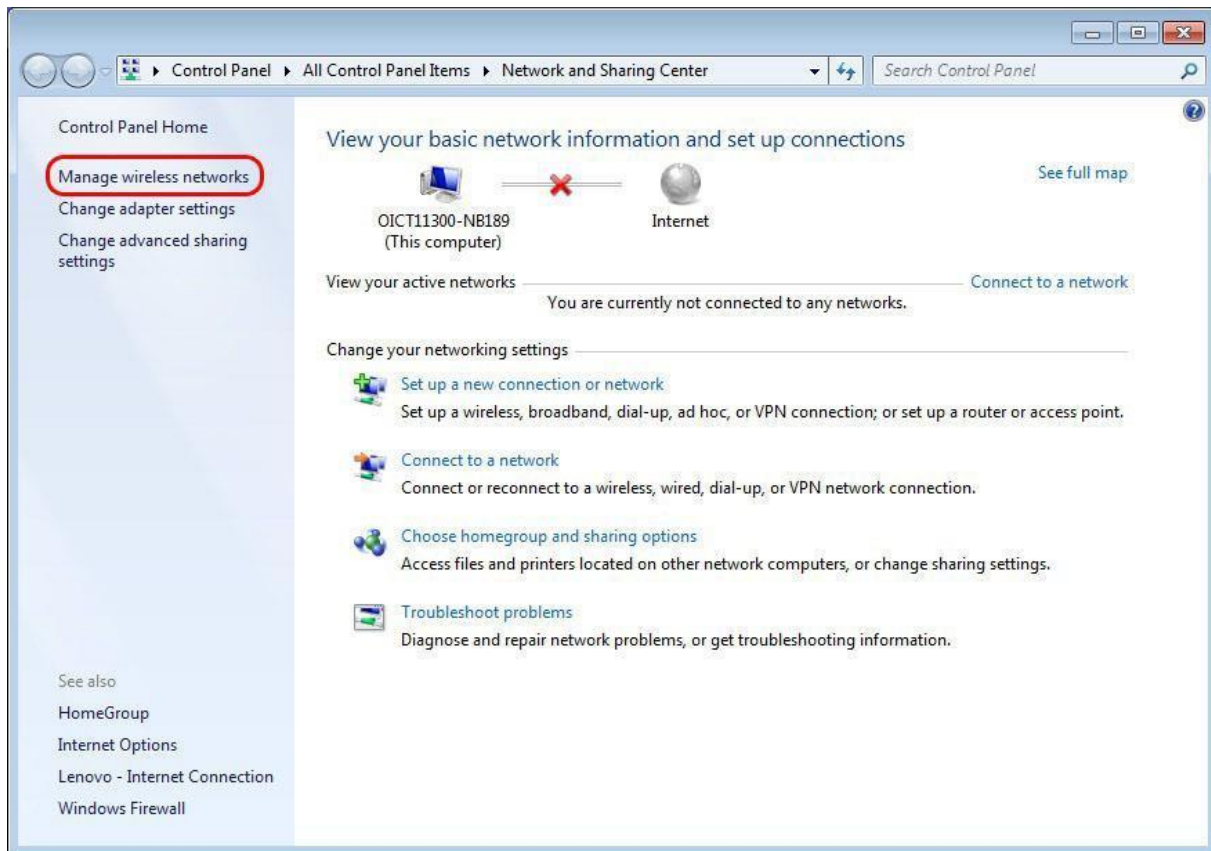


To set up ChulaWiFi connection

1. Right click on WiFi symbol, *Wireless Network Connection* page will pop up > Click *Open Network and Sharing Center*



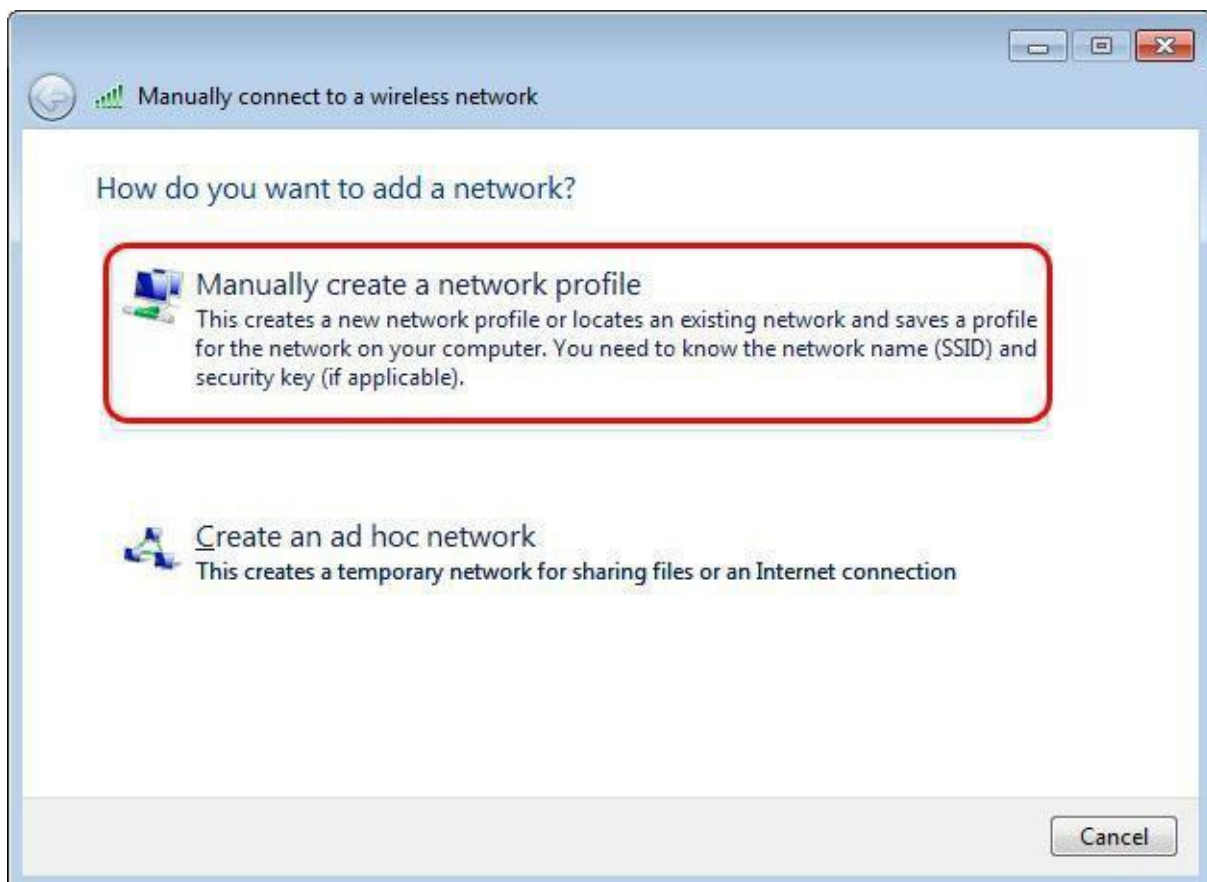
2. On *Open Network and Sharing Center* page, click on *Manage wireless networks*



3. Click *Add* to create ChulaWiFi network




4. Click on *Manually create a network profile*



5. Once you get on *Manually connect to a network profile* page:

- **Type in the Network name box, i.e. ChulaWiFi (case sensitive)**
- **For Security type, select WPA2-Enterprise**
- **For Encryption type, select AES**
- **Click Next**



Manually connect to a wireless network

Enter information for the wireless network you want to add

Network name:

Security type:

Encryption type:

Security Key: Hide characters

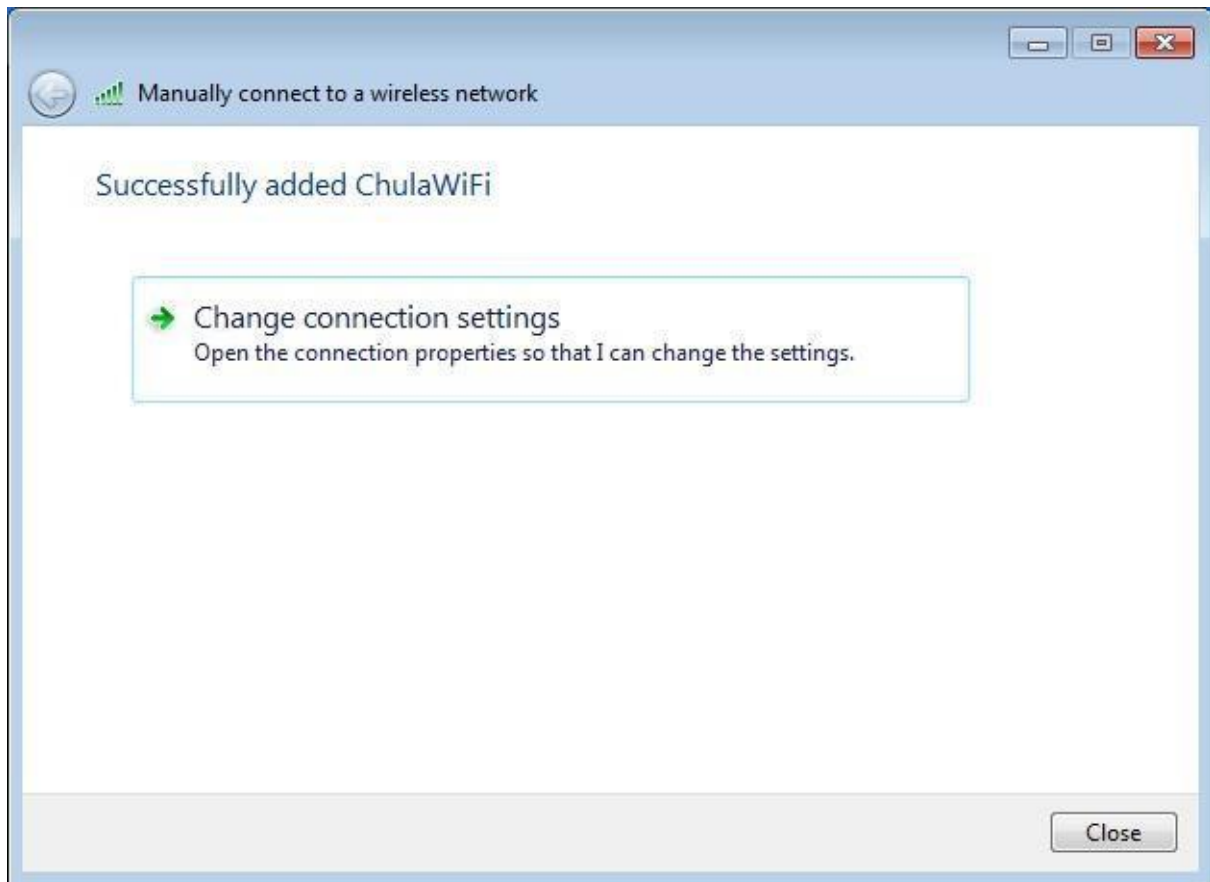
Start this connection automatically

Connect even if the network is not broadcasting

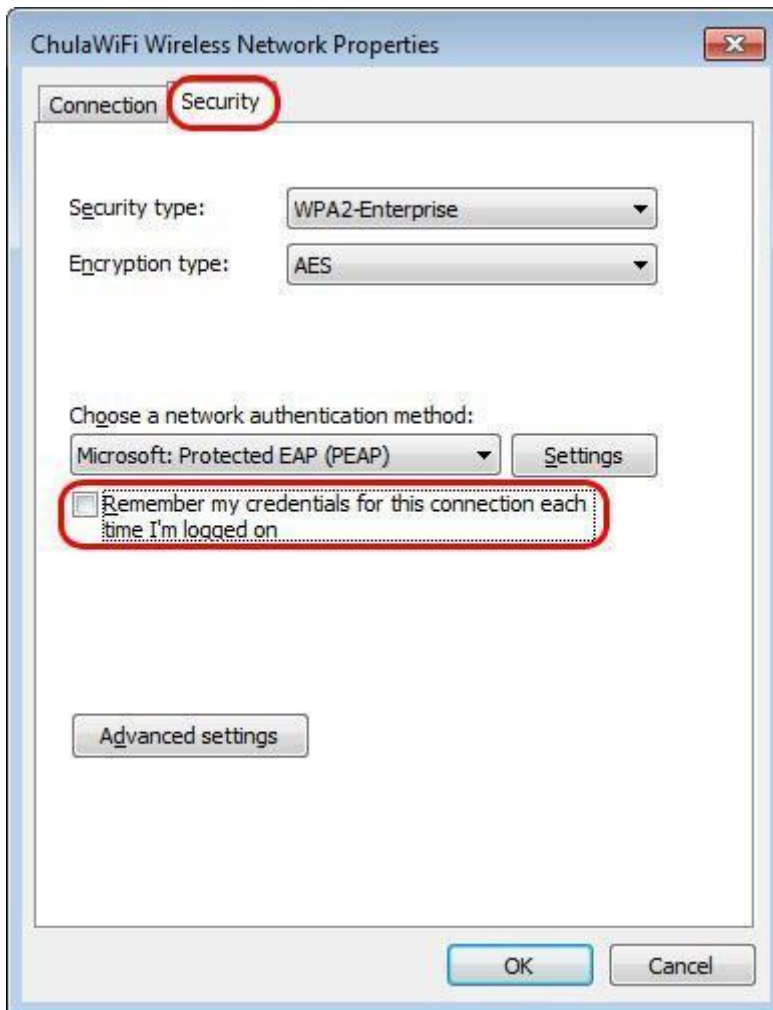
Warning: If you select this option, your computer's privacy might be at risk.

Next Cancel

6. Click on *Change connection settings*, and you will be directed to *Wireless Networks Properties* page



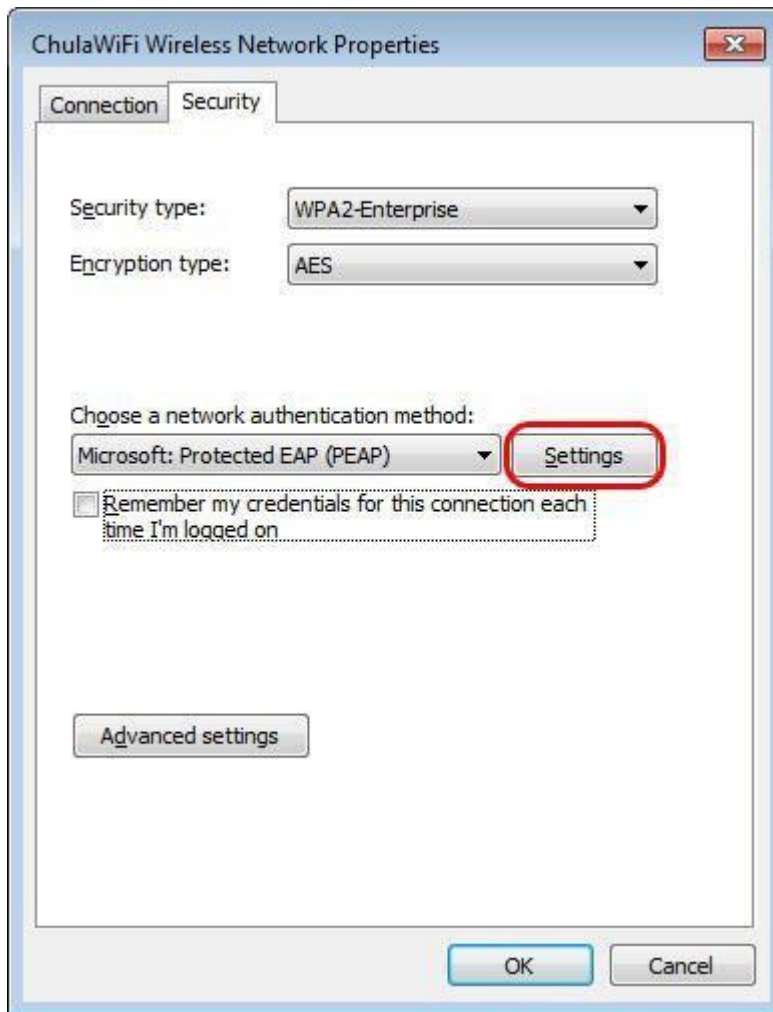
7. On *Wireless Networks Properties* page, select *Security* and cancel *Remember my credentials for this connection each time I'm logged on*



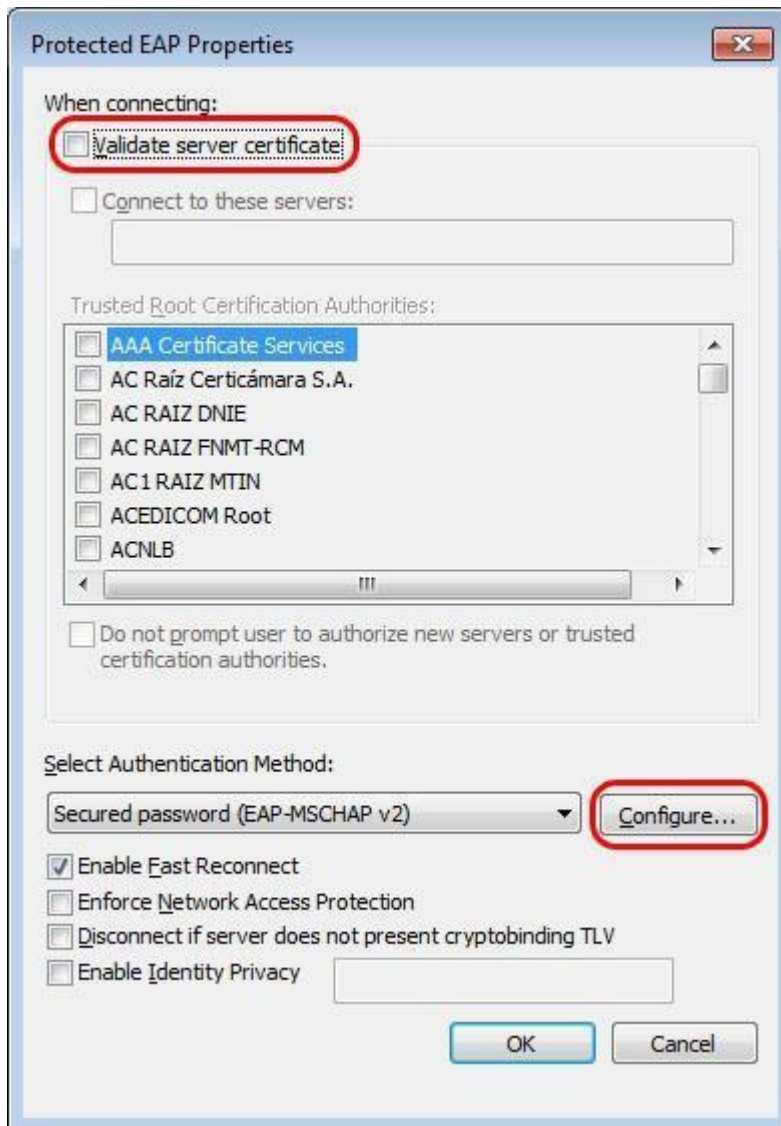
Warning

If you select “Remember my credentials for this connection each time I’m logged on”, your password will be saved. If it is a shared computer or if you lend it to someone, they will be able to gain access to and potentially misuse your password. This action is deemed an offence according to the Computer - Related Crime Act B.E. 2550

8. Click on *Settings*



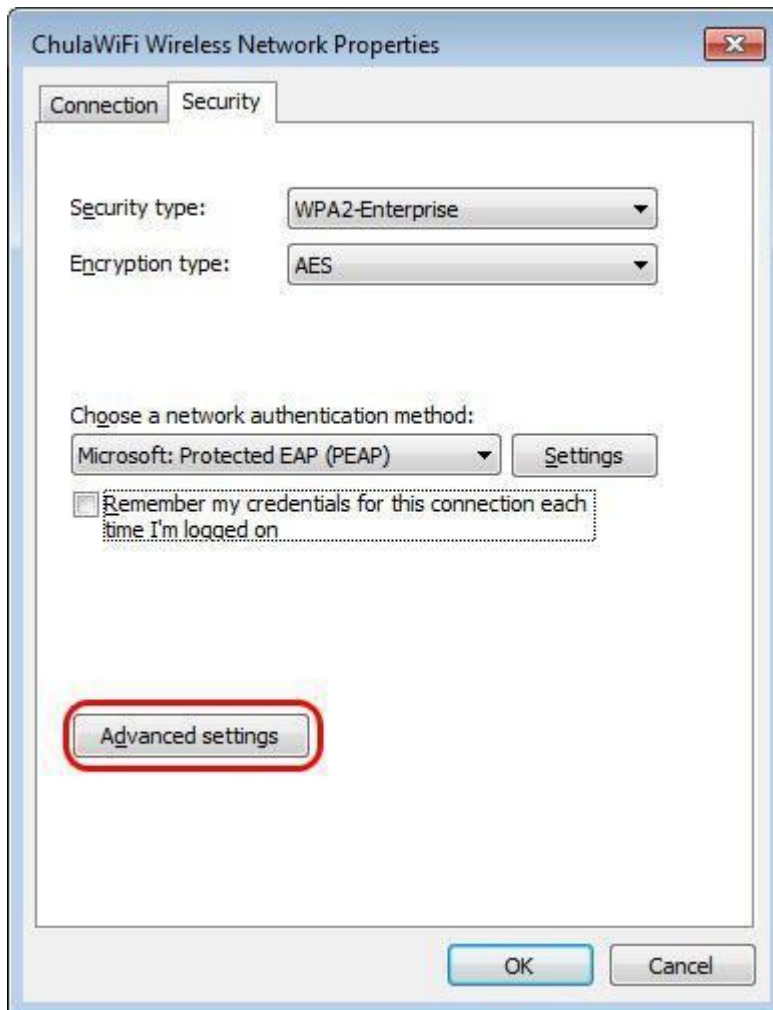
9. On *Protected EAP Properties* page, cancel *Validate server certificate*> Click *Configure* button



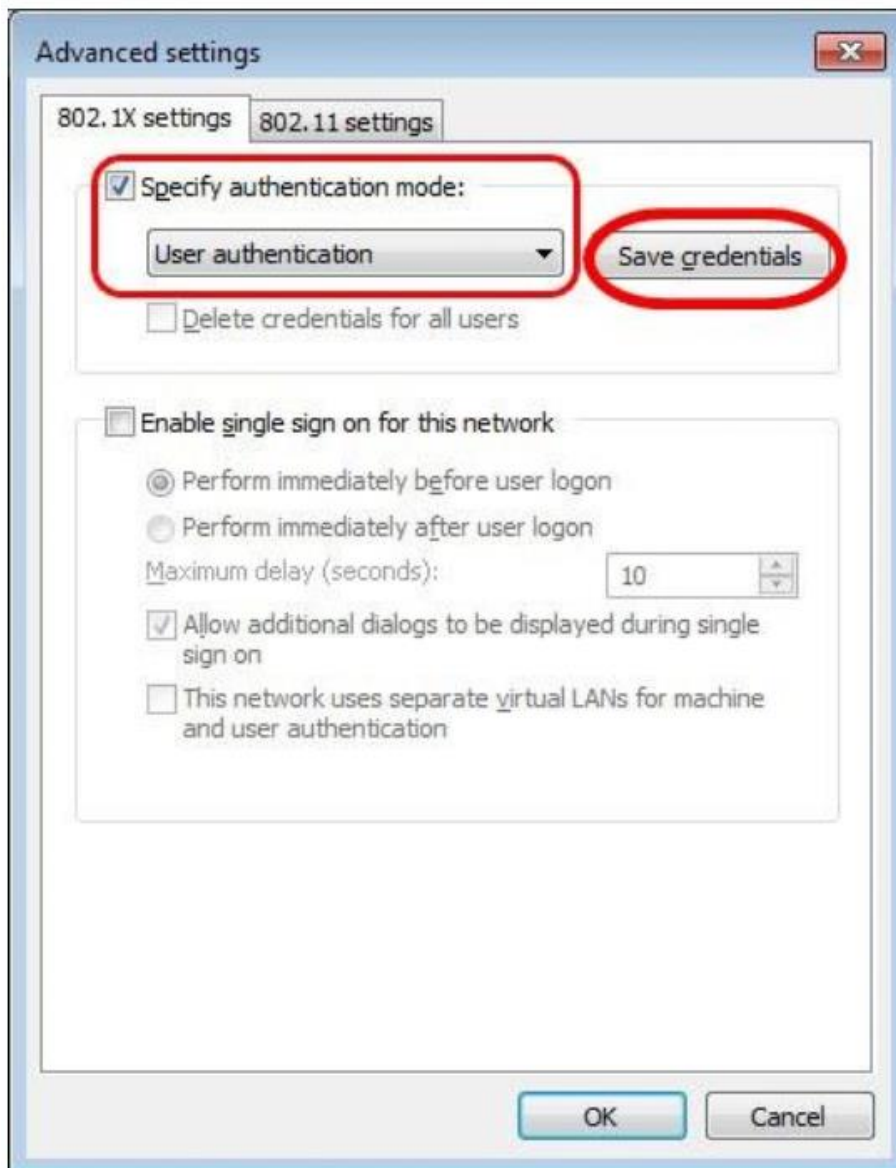
10. You will be redirected to *EAP MSCHAPv2 Properties*>Cancel *Automatically use my Windows logon name and password (and domain if any)*> Click *OK*



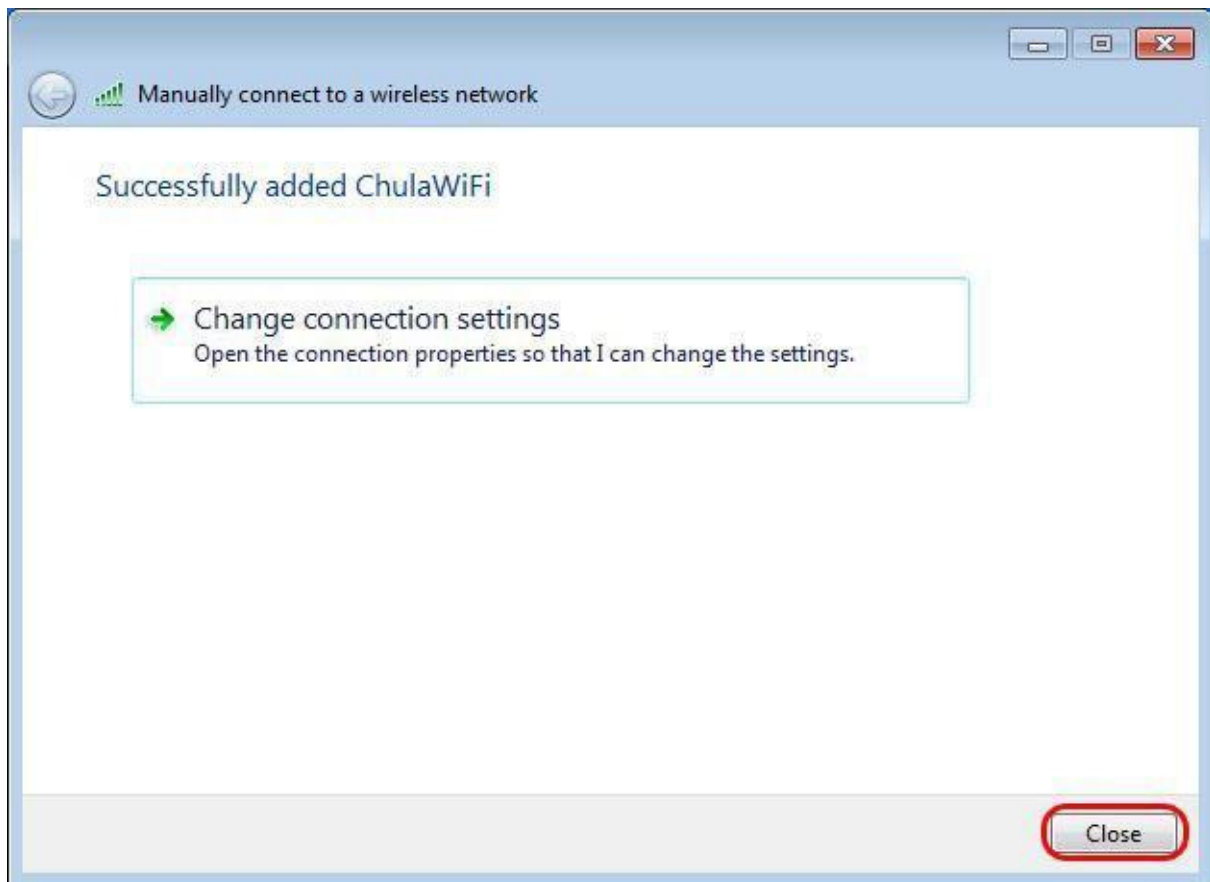
11. You will be redirected to *Wireless Networks Properties* page> Click *Advanced settings*



12. On *Advanced settings* page, change from *User or computer authentication* to *User authentication*> Click *Save credentials*> Enter your username and password> Click *OK*



13. Click *Close*



14. Wait a few moments; the WiFi symbol will appear when you are successfully connected.